

# CHARLESWORTH in Boise

If you've been on the hunt for a great suburban location with quick access to the freeway and downtown Boise, Charlesworth is for you!

Charlesworth is a wonderful community near the newly built South Meridian YMCA just six minutes away. You will also enjoy the Peregrine Fund's World Center for Birds of Prey – only ten minutes away. Grocery stores are within your reach, including Albertsons just across the street! Welcome to Charlesworth.

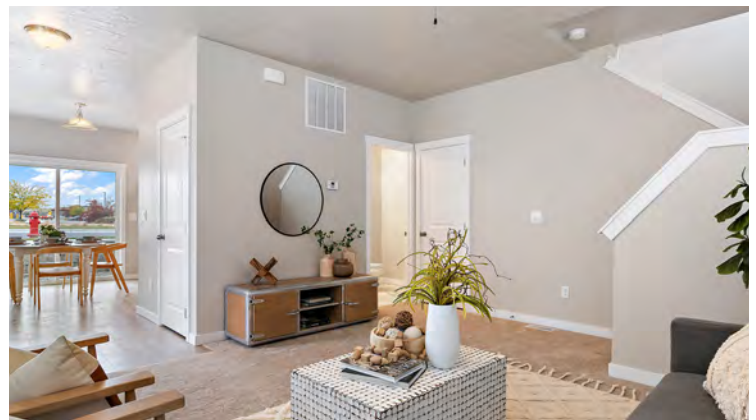


## Featured Plans

### New Townhomes

**Bartlett** (1,088 Sq Ft, 2 BR/2.5 BA, 2-Story Townhome)

**Alpine** (1,280 Sq Ft, 3 BR/2.5 BA, 2-Story Townhome)



### Direction to Community:

From I-84 exit on Eagle Road, South on Eagle Rd to Lake Hazel, Left on Lake Hazel, Left on Five Mile, Left on Meyering Lane.



### Closest Sales Center: Southern Ridge

3992 E Eagle Ridge Drive, Nampa ID, 83686

# CHARLESWORTH



## Features

New Townhomes in Boise  
1,088 to 1,280+ Square Feet  
2-3 Bedrooms | 2.5 Bathrooms



## Townhome Amenities

Tot Lot, Sport Court, Clubhouse  
with an Exercise / Fitness Room



## HOA Dues

Set Up Fee: \$250  
Annual Dues: \$960  
Transfer Fee: \$250



## Schools

West Ada School District  
Lake Hazel Elementary  
Lake Hazel Middle  
Mountain View High School



## Areas of Interest



**Boise Airport:** Less than 15 Minutes  
**Boise State University:** Less than 20 Minutes  
**Zoo Boise:** Less than 20 Minutes  
**Boise Train Depot:** Less than 20 Minutes  
**Birds of Prey Center:** Less than 10 Minutes

### Hospitals & Urgent Care Centers

St. Alphonsus Hospital (less than 20 Minutes)  
St. Luke's Hospital (less than 25 Minutes)  
Urgent Care Centers (1 Minute)

### Shopping

Grocery and Retail Stores (2-20 Minutes)

### Dining

Restaurants including Goodwood BBQ, Red Robin, Olive Garden, and Smoky Mountain Pizza (15-20 Minutes)

